

# Holiday Visions Afghan

by Nicky Epstein

## Size

Finished size approximately 42" x 55".

## Materials

The original yarn has been discontinued, below is a suggestion or use any worsted weight yarn as a substitute.

Cascade Yarns Pacific 40% Superwash Merino Wool / 60% Acrylic. 100g (3.5 oz)/ 213 yards (195 meters): 7 skeins #46 (MC), 2 skeins #27 (CC), 1 skein each of #02, #43, #36, #56, #52, #11, #04 (or worsted weight scraps)

Size 8 (5 mm) circular knitting needles or size needed to obtain Gauge.

**Gauge:** 16 sts and 23 rows = 4" in St st. To save time, take time to check your gauge.

## Notes

Work on circular needle back and forth in rows. All motifs are worked from charts in duplicate stitch after afghan is knitted. Work each duplicate stitch over one knit stitch. Each square on each chart represents one stitch; use the afghan image as your suggested Color Key.

## Afghan

With MC, cast on 155 sts. Beg with a knit row, work in St st (k on RS rows, p on WS rows) for 296 rows. Bind off.

## Top/Bottom Border

With RS facing, pick up and k154 sts across top of afghan. Work in garter st (knit every row) for 2", while at the same time, inc 1 st each end every other row 5 times--164 sts. Bind off. Rep for bottom edge.

## Side Border

With RS facing, pick up and k215 sts along each side of afghan. Work as for Top/Bottom Border--225 sts. Bind off.

## Embroidery

Using tapestry needle for all embroidery. Follow Chart 1 to duplicate stitch motif outlines on afghan.

**Afghan Charts 2-9** Using the picture as a Color Key, duplicate stitch motifs in each outlined area.



**Note:** Refer to photo for color and embroidery placement.

## Detail Embroidery:

**Gift:** With E, work 2-wrap French knots for gift-wrap design.

**Snowman:** With MC, work 2-wrap French knots for buttons and eyes; work 2-wrap French knot with C for nose. Make two long straight stitches with G for mouth. With B, outline stitch arms.

**Pear:** With CC, outline stitch leaf vein.

**Christmas Tree:** With A, make a single straight stitch for each candle and work a double-cross at top of tree. With G, make a small straight stitch at top of each candle for flame.

**Bow:** With E, work 2 straight stitches from each side of center knot for bow creases.

**Stocking:** With G, work a chain st at top, right-hand edge of stocking for hanging loop.

**Flower:** With F, work 6 straight stitches radiating from flower center. Work a long straight stitch, then add a 2-wrap French knot to end for each bud stamen.



Chart 6

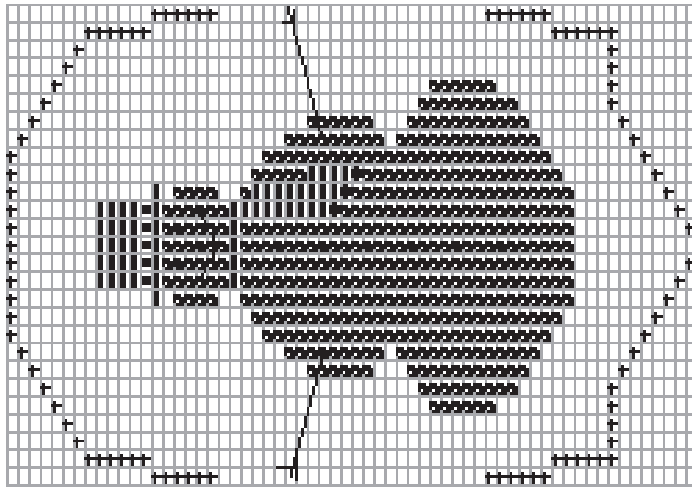


Chart 9

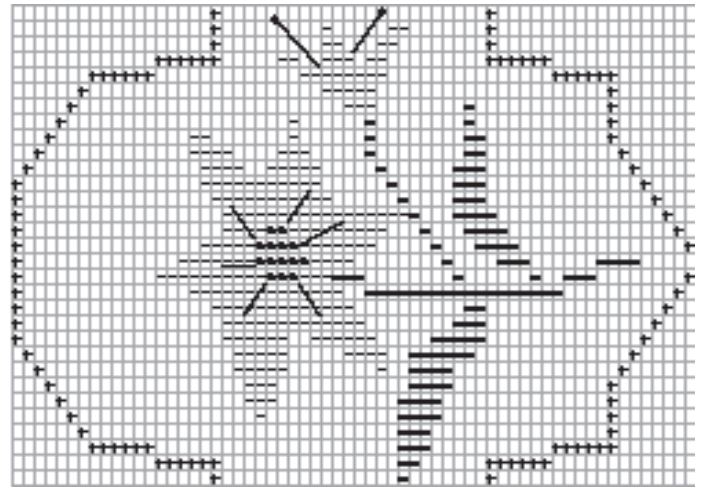


Chart 5

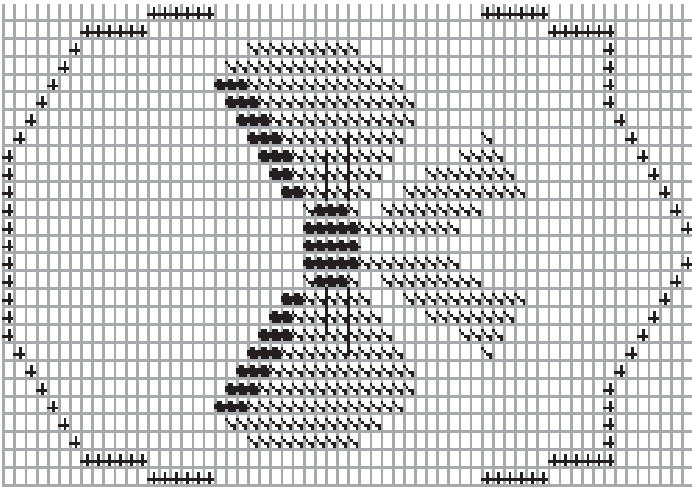


Chart 8

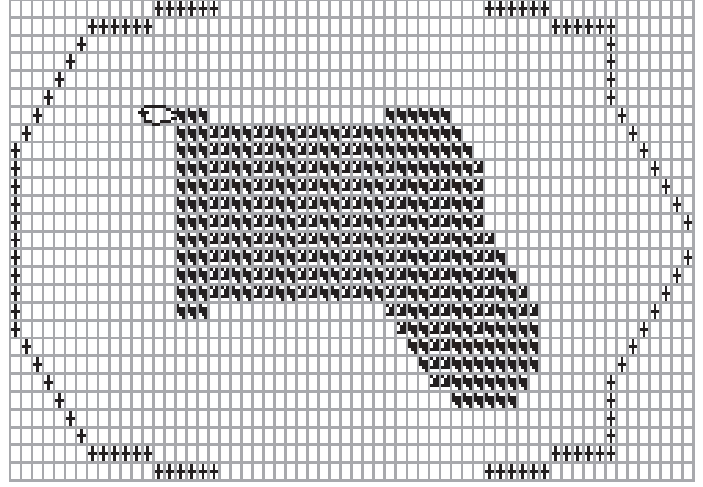


Chart 4

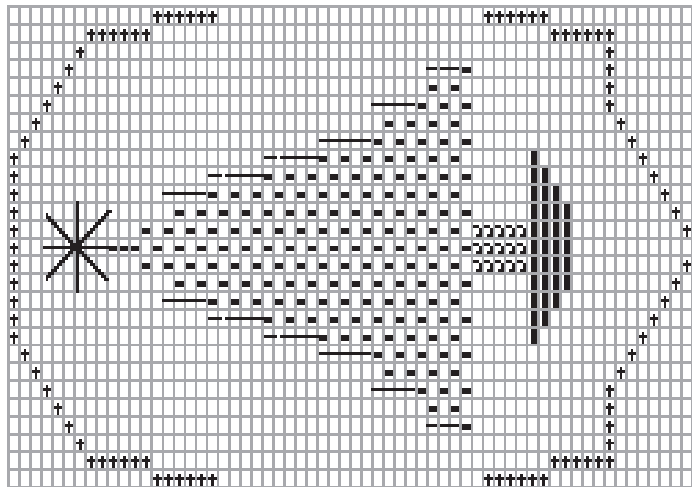


Chart 7

