



**Available November 2010
everywhere books are sold.**



PotterCraft.com



SNOWFLAKE SPLENDOR HAT

This simple style can be the basis for a lot of beautiful block hats. Here, the seam is in the front, but wearing the seams on the side of the hat would also work.

SIZES

Adult size Small/Medium (Large)

MATERIALS

- Cascade Pastaza (50% llama/50% wool), each approximately 132 yards (121m) and 3.5oz (100g)
- 1 skein #309 Red (MC)
- 1 skein #064 Gray (CC)
- Size U.S. 8 (5mm) straight needles for Small/Medium; size U.S. 9 (5.5mm) for Large size
- Size U.S. 7 (4.5mm) double-pointed needles for Small/Medium; size U.S. 8 (5mm) for Large size
- Size G/6 (4.25mm) crochet hook
- Polyfil stuffing

GAUGE

20 stitches and 20 rows = 4" (10cm) in Fair Isle pattern on size U.S. 8 (5mm) needles
18 stitches and 18 rows = 4" (10cm) in Fair Isle pattern on size U.S. 9 (5mm) needles

KNITTED MEASUREMENT

Block Dimensions Approximately 9.5" (10.125") (24 [26] cm)
Hat Dimensions Approximately 20" (51cm) (21" [53.5cm]) diameter

TAKE TIME TO CHECK GAUGE.

SNOWFLAKE BLOCK

(MAKE 2)

With size U.S. 8 (9)/5 (5.5 mm) straight needles, make two Snowflake blocks.

With MC, cast on 33 stitches. Work Snowflake chart in St st intarsia. Bind off with MC.

FRAME

With the right side facing, using double-pointed needles and MC, beginning at the top right, *pick up and k1 st in the corner, pm, pick up and k35 stitches along one side of the block; repeat from * 3 times (144 stitches). Pm and join to work in the round.

STITCH KEY

- White (MC)
- Light Gray (CC)

Rnd 1 With MC, *k1 (corner st), inc 1 in the next st, k to 1 st before the next marker, inc 1 in this st; repeat from * around (8 stitches increased).

Rnd 2 With CC, knit.

Rnds 3 and 4 With CC, repeat rnd 1 (168 stitches after rnd 4).

Rnd 4 With MC, repeat rnd 2. Rnd 5 With MC, repeat rnd 1 (176 stitches).

Rnd 6 With CC, knit.

Rnd 7 With CC, repeat rnd 1 (184 stitches). Bind off with CC.

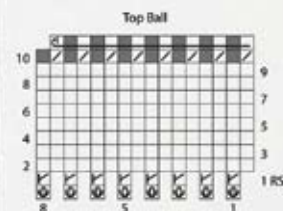
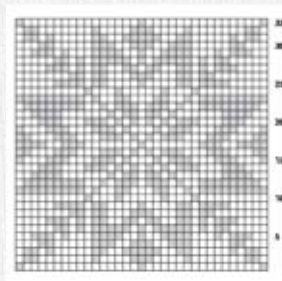
FINISHING

With CC and a crochet hook, work a row of slip st around the side and top edges leaving bottom edge open.

CORD TIES

With CC and double-pointed needles, cast on 4 stitches. Work in I-cord for 4" (10cm). Change to MC and work in I-cord for 18" (45.5cm) more. Bind off.

Make 3 knots at the MC end of each cord. Sew the CC end of each cord to the center of each block.



NOTE The centers of the blocks form the sides of the hat.

Tack the top corners of the hat together.

TOP BALL

With MC, cast on 8 stitches leaving a long tail for seaming.

Row 1 (rs) K1&b of every st (16 stitches).

Row 2 and all WS rows Purl.

Rows 3, 5, 7 and 9 Knit.

Row 11 *K2tog; repeat from * to end (8 stitches).

Pass all the stitches, one at a time, over the first st. Fasten off. Thread the cast-on tail through the cast-on stitches, gather and secure. Stuff with polyfil, sew the side seam and attach the ball to the top of the hat.